

Save Money and Reduce Energy Consumption by Centrally Controlling Power Settings of Networked PCs

When it comes to power management of your PC networks, the challenge lies in balancing financial, environmental and productivity considerations. In addition, IT's mandate to maximize system availability subtly conflicts with the view of some in the power management community because "standby," "hibernate" and "off" imply a period of downtime as the system returns from power-saving mode to availability. Deploying a solution that is capable of addressing these considerations is essential to a successful "Green IT" initiative.

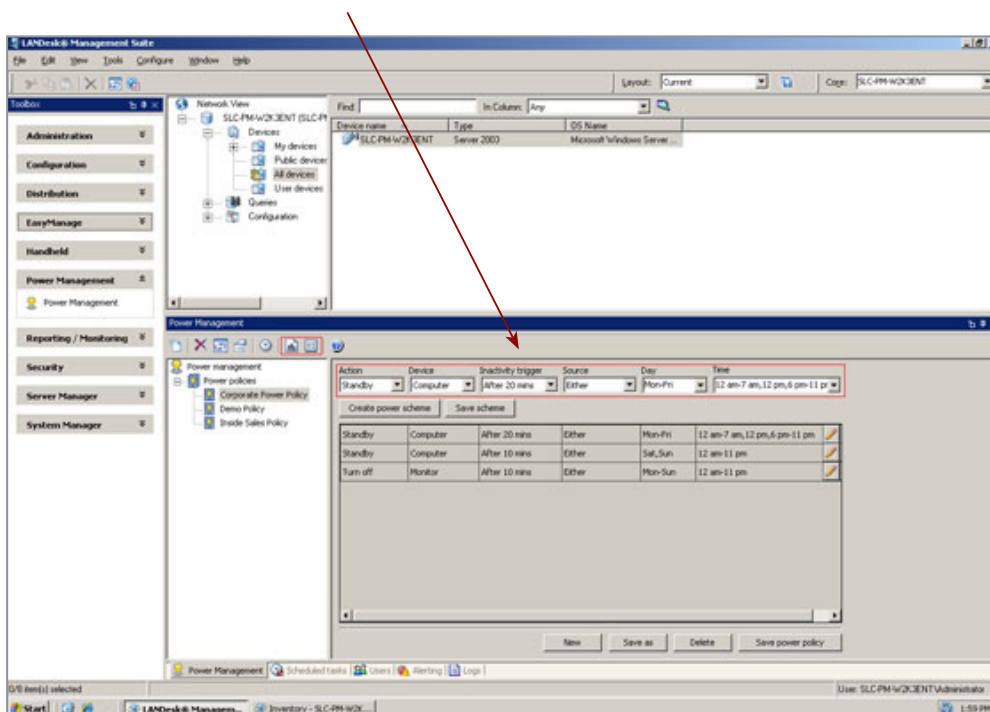
Avocent's LANDesk® Power Manager software provides the tools necessary to conduct prudent power management and balance the trade-offs between power savings and system availability. You can be confident that your power management strategy will not interfere with employee productivity with LANDesk Power Manager.

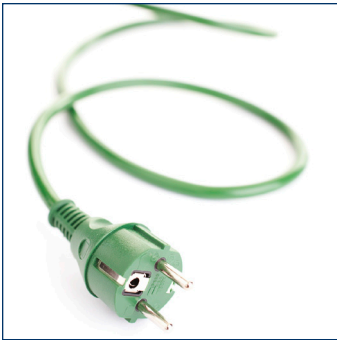
Easier Access, Greater Flexibility, and Enhanced Reporting via a New User Interface

With LANDesk® Power Manager, you get a simple-to-use interface with local scheduling capability to easily create and configure power policies and settings beyond what Microsoft Windows offers. You can then deploy your power policies automatically based on group policies, location, or a variety of other ways that are appropriate to your organization. For example, the solution features "chronological variability" that enables you to set management policies that can vary by hour of the day and day of the week, something that Windows doesn't allow you to do natively. Chronological variability allows you to have different policies on weekends versus Monday through Friday. You can even establish policies appropriate for non-traditional work weeks, such as Monday through Thursday.

Create and Configure Power Policies and Settings

As shown below, you can centrally define and administer power schemes or policies by selecting options from the drop-down boxes highlighted in red: Action, Device, Inactivity trigger, Day and Time. Multiple power schemes with "chronological variability" can be combined into a single power policy. Once saved, the policy is distributed to target computers.



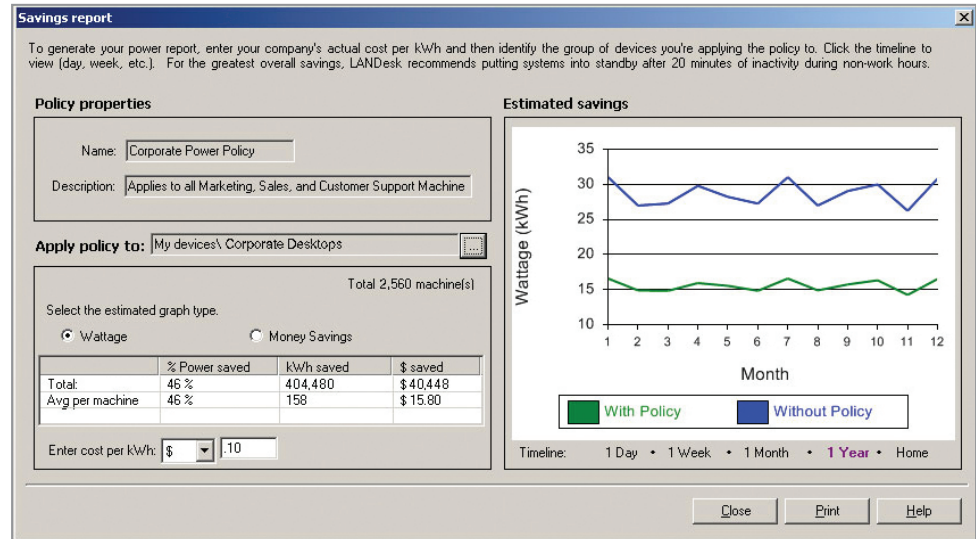


In the area of power management for example, Brevard estimates that by simply using LANDesk to turn off or put to sleep most of its 25,000 computers each day at 6:00 p.m. automatically, it will be able to enjoy between \$300,000 and \$500,000 in annual power savings.

—LANDesk Customer Success Story: “Brevard Public Schools—Excellence in Education and IT Administration,” 2008

Enhanced Reporting Capabilities

In addition to policy scheduling flexibility, LANDesk® Power Manager offers enhanced reporting features. Prior to policy distribution, you can evaluate the estimated power and financial savings by clicking the reporting button. Clicking the reporting button brings up the “Savings report” window shown below.



Within the savings report window you:

- Select the group of computers you want to target for analysis with the policy
- Choose to graph savings by wattage or by financial savings
- Enter actual cost per kilowatt hour
- Specify the desired timeframe (e.g. weekly, monthly, annually)

The report output shown above estimates 46% savings in wattage consumed over one year (158 kilowatts or \$15.80 per machine). The typical savings per system is \$10 to \$20/year (computer plus monitor). Savings can be significantly more where energy costs are higher, such as Europe.

Key Features and Benefits

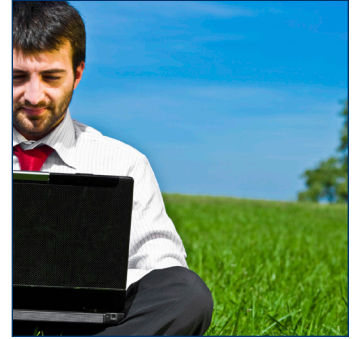
LANDesk® Power Manager offers these advantages and more:

- **New, comprehensive reporting**—Displays the percentage of power saved, the kilowatt hours saved, and the dollars saved. You can estimate power savings before deploying a policy, easily document power savings, and provide accurate reports to management.
- **Custom wattage settings**—You can assign customized wattage settings to specific types of systems, facilitating high degrees of accuracy.
- **Energy savings** of \$10 to \$20/year per machine (computer and monitor) for organizations that don't currently have power management policies in place.

Experience the Eco- and CFO-Friendly Advantages of End-Node Power Management Control

Now you can manage the trade-offs between power savings and system availability while helping your organization balance financial, environmental and productivity imperatives. [Click here](#) to download our free whitepaper that provides the rationale behind our recommendation that customers apply simple, balanced power-saving policies, or paste this link into your browser: <http://www.landesk.com/WorkArea/downloadasset.aspx?id=5534>

For more information on LANDesk Power Manager, please contact your LANDesk Solutions Provider, or call LANDesk at 1-800-982-2130 or email us at sales@landesk.com.



For IT departments, a focus on costs—and energy costs in particular—is a logical place to start. ... Reducing the electric bill cuts costs and frees up funds for additional IT investments.”

—Elana Varon, “A Little Bit Green”, *CIO Magazine*, April 1, 2008

Visit www.landesk.com for more information.

This information is provided in connection with LANDesk® products. No license, express or implied, by estoppel or otherwise, or warranty is granted by this document. LANDesk does not warrant that this material is error free, and LANDesk reserves the right to update, correct or modify this material, including any specifications and product descriptions, at any time, without notice. For the most current product information, visit <http://www.landesk.com>.

Copyright © 2008, Avocent Corporation. All rights reserved. LANDesk and Avocent and their respective logos are registered trademarks or trademarks Avocent Corporation, its subsidiaries or its affiliated companies in the United States and/or other countries. Other brands and names may be claimed as the property of others. LSI-0774 12/08/JBB/NH/DJ

