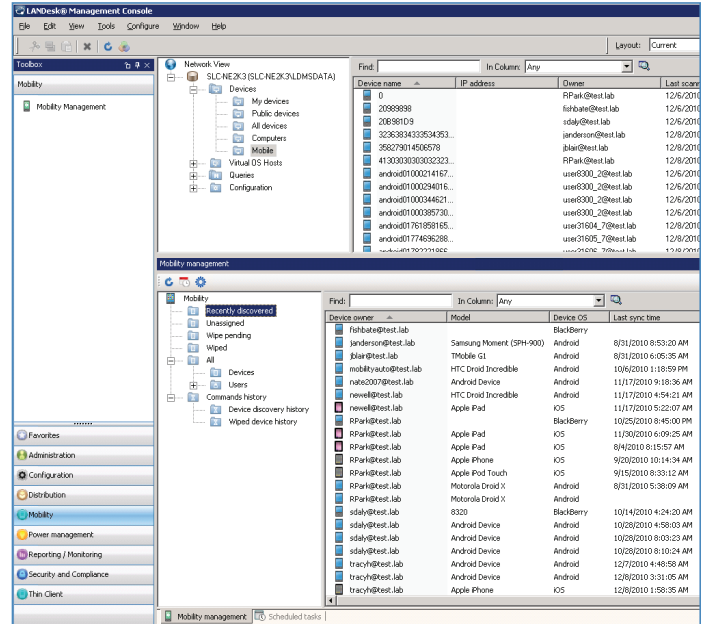


LANDesk® Mobility Management

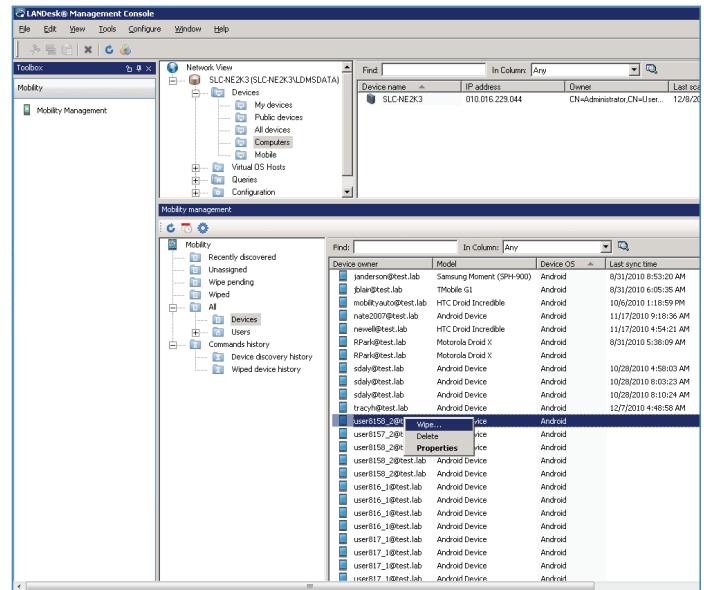
As smart phones, tablet PCs, and other mobile devices become more advanced, they're gaining greater access to corporate networks and storing more company information. This creates a challenge for IT managers who need to know what is connected to their network, what data is being consumed, and wipe the data if mobile devices are lost or stolen.

LANDesk® Mobility Management solves these problems by applying renowned LANDesk discovery, inventory, and management capabilities to mobile devices from a single, easy-to-use console. With LANDesk Mobility Management you can:

- Discover devices without an agent at the point of data access through the ActiveSync and BlackBerry Enterprise Server (BES) systems
- Know who's using what devices and what data they're consuming
- Extend corporate management and security to out-of-policy devices
- Wipe data from devices that are lost or stolen, or when users leave your organization with a single user-based policy action
- Improve business processes for reclaiming corporate IT assets and proprietary information—as in the case of employee termination



LANDesk Mobility Management in Single-Console View



Wiping a Lost or Stolen Device

Mobility Management Functionality for LANDesk® Management Suite	LANDesk Mobility Management
Extend corporate management and security to mobile devices including BlackBerry, iPhone, Android (2.x and later), Palm OS phones and devices, and Microsoft Phone 7	✓
Discover devices without an agent	✓
Single management console for all users' devices	✓
Remove data from a single device or all users' devices	✓

Key Features

Discovery

- Agentless – No agent required for basic functionality
- ActiveSync – Using Exchange ActiveSync technology, discovers any device such as Apple iPhone, Palm, Microsoft Phone 7, and Google Android devices
- BlackBerry Enterprise Server (BES) – BlackBerry wireless platform from Research In Motion (RIM) connects to collaboration software like Microsoft Exchange, Lotus Domino, and Novell GroupWise

Inventory

- Hardware inventory – Hardware and operating system information
 - Make
 - Model
 - OS
 - OS version
- Sync details – Information related to syncing actions
 - Mailbox (owner)
 - Last sync time
 - First sync time
 - Last wipe

Wipe

- Complete wipe – Wipes all information on the device, which can be restored through the device synchronization or through mobile service provider
- Perpetual wipe – Once device is wiped, the solution will continue to wipe the device every time it attaches to the corporate network, preventing additional access to corporate data until canceled by administrator

Management Platform Integration

- Single-console
 - LANDesk® Management Suite and LANDesk® Security Suite (32-bit console)
 - LANDesk® Service Desk – self-service portal (Web-based)
- Multi-modal connectivity
- Automated management activities
- Integrated lifecycle management

Supported Devices

Smart Phones

- BlackBerry
- iPhone
- Google Android (2.x and later)
- Palm OS phones and devices
- Microsoft Phone 7

Tablet PCs

- Apple iPad
- Lenovo
- Dell

More Information

Visit our website: <http://www.landesk.com/Mobility> Management or speak with a LANDesk Mobility Management product representative:

1.800.982.2130
sales@landesk.com

For specific country offices and contact information, visit www.landesk.com

About LANDesk

LANDesk enterprise management solutions simplify IT complexity, protect endpoints, and improve IT service levels. Our systems management, layered endpoint security, and IT service management technologies are reliable, easy to use, and deliver rapid ROI.

Visit www.landesk.com for more information.

To the maximum extent permitted under applicable law, LANDesk assumes no liability whatsoever, and disclaims any express or implied warranty, relating to the sale and/or use of LANDesk products including liability or warranties relating to fitness for a particular purpose, merchantability, or infringement of any patent, copyright or other intellectual property right, without limiting the rights under copyright.

LANDesk retains the right to make changes to this document or related product specifications and descriptions, at any time, without notice. LANDesk makes no warranty for the use of this document and assumes no responsibility for any errors that can appear in the document nor does it make a commitment to update the information contained herein. For the most current product information, please visit www.landesk.com.

Copyright © 2010, LANDesk Software, Inc. and its affiliates. All rights reserved. LANDesk and its logos are registered trademarks or trademarks of LANDesk Software, Inc. and its affiliates in the United States and/or other countries. Other brands and names may be claimed as the property of others.

LSI-0935 1210/AK/DL